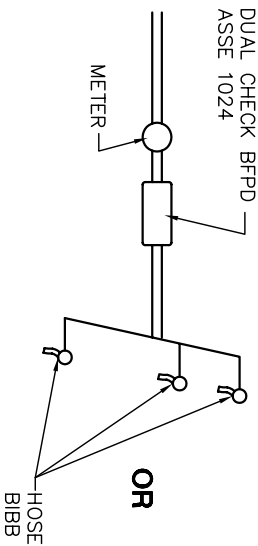
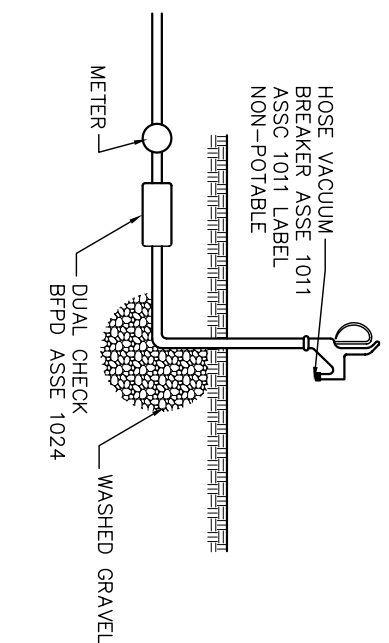


HOSE BIBB

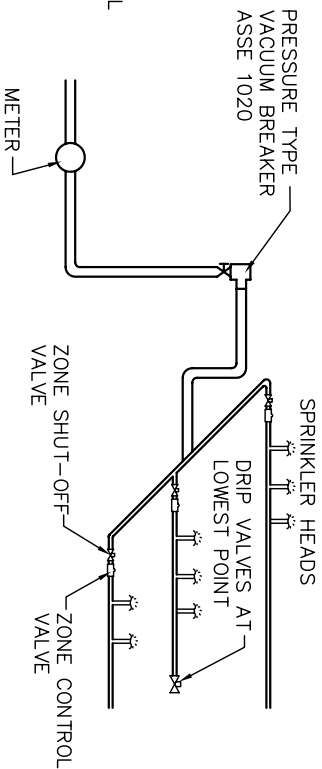


NON-RECERTIFIABLE BFPDS (ASSE 1001, ASSE 1011) ON HOSE BIBBS

YARD HYDRANT



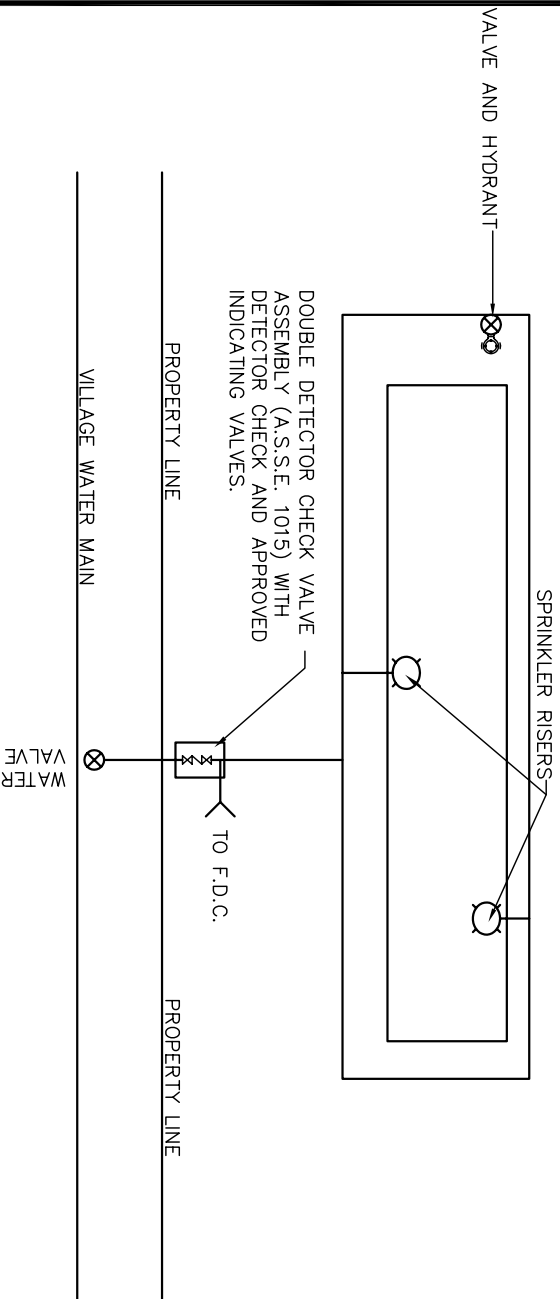
SPRINKLER SYSTEM



CONDITIONS

- A. SHUT-OFF VALVES ARE ALLOWED DOWNSTREAM OF THE BFPD
- B. THE PRESSURE TYPE VACUUM BREAKER MUST BE A MINIMUM OF 12" ABOVE THE HIGHEST SPRINKLER HEAD.

YARD MAIN SYSTEM ARRANGEMENT



NOTES

- A. A DRAWING OF EACH PROPOSED IRRIGATION SYSTEM MUST BE APPROVED BY THE VILLAGE PRIOR TO CONSTRUCTION.
- B. IF IRRIGATION SYSTEM IS NONE OF THE ABOVE, USE A REDUCED PRESSURE BACKFLOW PREVENTER, (ASSE 1013), AFTER THE WATER METER.

VILLAGE OF

ADA



IRRIGATION DETAILS

REVISIONS:

DATE APPROVED:
AUG. 1999
PAGE No.
800-23